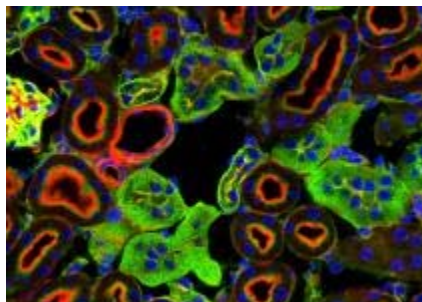


Real-Time PCR Equipment at PM, KDT & TMDT

The Real-time PCR facility is a fee-for-service facility with sites at Princess Margaret (PM) Cancer Centre, Krembil Discovery Tower (KDT), and Toronto Medical Discovery Tower ([TMDT](#)). The facilities are managed by Research Laboratory Services.



Service Department(s): Research Communications

Available Equipment

Announcement:

JUNE 1ST, 2015

- We have 4 more Real Time PCR machine from Roche for [OCI](#) Community. 3 are located at PM and 1 is located in [TMDT](#). Please see below for the locations
- We are going to provide training sessions for OCI users who would like to use the new equipment; communication regarding the training will be sent out shortly
- Anyone would like to book the new machine, please contact Wynne Yiu at wyyiu@uhnresearch.ca

MARCH 13TH, 2015

- "RTPCR [PMH](#) SDS 7900 1st machine" from Princess Margaret has been moved to TMDT, room 14-601. The machine will be back in service starting on Monday, March 16th, 2015
- The machine is now named as "TMDT SDS7900 14th 601". You may book time slot(s) in the Calcium Calendar under this new name

Site	System	Facility Location
PM	Applied Biosystems Sequence Detection Systems <ul style="list-style-type: none"> • SDS 7900HT (2 units available) 	PM (610 University Ave.), Rm 9-206/8-206

Roche

- PM
- LifeCycler 480 System (1 units available) PM (610 University Ave.), Rm 7-206
 - LifeCycler 480 System (2 units available) PM (610 University Ave.), Rm 9-314

Applied Biosystems Sequence Detection Systems

- KDT
- SDS 7900HT (2 units available) KDT, Rm 5KD443

Applied Biosystems Sequence Detection Systems

- TMDT
- SDS 7900HT (1 unit available) TMDT, Rm 14-601

Roche

- TMDT
- LifeCycler 480 System (1 units available) TMDT, Rm 13-601

Using the Facility

- To use or book the instruments, you must be a registered user. Please contact Wynne Yiu at wyiu@uhnresearch.ca for registration
- Once registered, users can book the instrument up to 14 days in advance using the [Calendar Booking Program](#)
- Each time slot is 2.5 hours, which allows 2 runs and brief data analysis
- Minimum 24 hours notification is required for any cancelations

Training

See the following documents before starting your RT-PCR experiments:

- [SDS Training, "Getting started with real-time PCR"](#)
- [About Applied Biosystems Gene Expression, "Real-Time PCR Vs. Traditional PCR"](#)
- [User guide for ABI PRISM 7900HT](#)

Technical Support

- For technical support, contact [Malcolm Smith](#) (at PM/[TMDT](#)) or [Frank Vidic](#) (at KDT).

Quick Links

- [Booking Calendar](#)

Contacts

Account Registration

[Wynne Yiu](#)

Research Analyst
416-581-7657

Technical Support:

Site	Contact
PM/ <u>TMDT</u>	<u>Malcolm Smith</u> Supervisor 416-946-4544
KDT	<u>Frank Vidic</u> Research Facilities Coordinator 416-603-6462