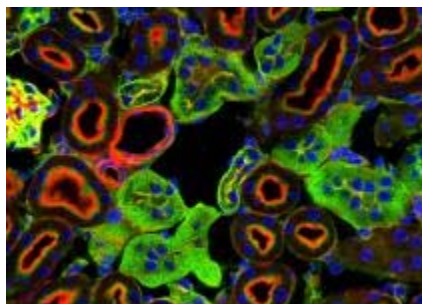


Flow Cytometry Facility at PM/CFIBCR

Equipment and expertise necessary for analyses and cell sorting using flow cytometry. Located in the Princess Margaret Cancer Centre, Rm 8-606, open 24 hours (access card required). Facilities available for UHN and non-UHN users.



Service Department(s): Research Communications

Available Equipment

- Analyzers
 - Four BD Biosciences FACSCalibur
 - Dual laser 488/635nm, 4 colour analysis
 - One BD Biosciences FACSCanto
 - Dual laser 488/635nm, 6 colour analysis
 - One BD Biosciences FACSCanto II
 - 3 laser 405/488/635nm, 8 colours
 - One BD Biosciences FACSCanto II High Throughput System (HTS)
 - 3 laser 405/488/635nm, 8 colours
 - 96,384 well sampler for high throughput screening
 - One BD Biosciences LSR II
 - 4 laser 325/405/488/632nm excitation
 - 10 colour analyzer (interchangeable filter sets for FITC, PE, dsRed, PE-Cy5, PE-Cy7, APC, APC-Cy7, Indo 1 violet and blue, GFP, YFP, etc.)
 - One BD Biosciences Fortessa
 - 5 laser 325/405/488/561/632nm excitation
 - 15 colour analyzer (interchangeable filter sets for FITC, PE, dsRed, mCherry, PE-Cy5, PE-Cy7, APC, APC-Cy7, Indo 1 violet and blue, GFP, YFP, etc.)
 - One BD Biosciences FACSArray
 - 2 laser 532/635nm
 - Capable of 4 color Bead Array applications
- Cell Sorters
 - Beckman Coulter Inc., MoFlo XDP (modulator flow cytometer)
 - 70,000 cells/s, 16 parameter, 14 colour sorting and analysis, automated cloning, and simultaneous collection of up to four populations within a sample
 - BD Biosciences FACSaria
 - High speed sorting, 10-colour analysis and automated cloning
 - Excitation: 488/365/635nm

Services

- Assistance for the operation of Analyzers is available (fee-for-service)
- Assistance provided for all users of the cell sorters
- Please call Frances at 416-946-4501 x5237 to make an appointment; established users can book time by clicking on [calcium calendar](#) (link is external).

Using the Facility

- New users: please contact Frances Tong (see “Contacts” below).
- Established users can book time by clicking on the following link: [Online booking calendar](#)

Training

Three hours of training providing full instruction on all aspects of using the facility and equipment (mandatory for inexperienced users).

Usage Arrangements (Assisted/Unassisted)

- FACSCaliburs: \$20-\$45/hour
- FACSCantos: \$30-\$55/hour
- Fortessa/LSRII:\$40-\$65/hour
- Training: \$55/hour
- Cell sorting: \$75/hour (assisted)

Sample Preparation

Please contact us for information on sample preparation.

Quick Links

- [Booking Calendar](#)

Contacts

[Arda Shahinian](#)

Manager
416-946-2237

[Frances Tong](#)

416-946-4501 (ext 5237)

[Betty \(Xueling\) Fan](#)

416-947-4501 (ext 5237)
610 University Ave., Rm 8-606
Princess Margaret Cancer Centre
Toronto, ON M5G 2M9